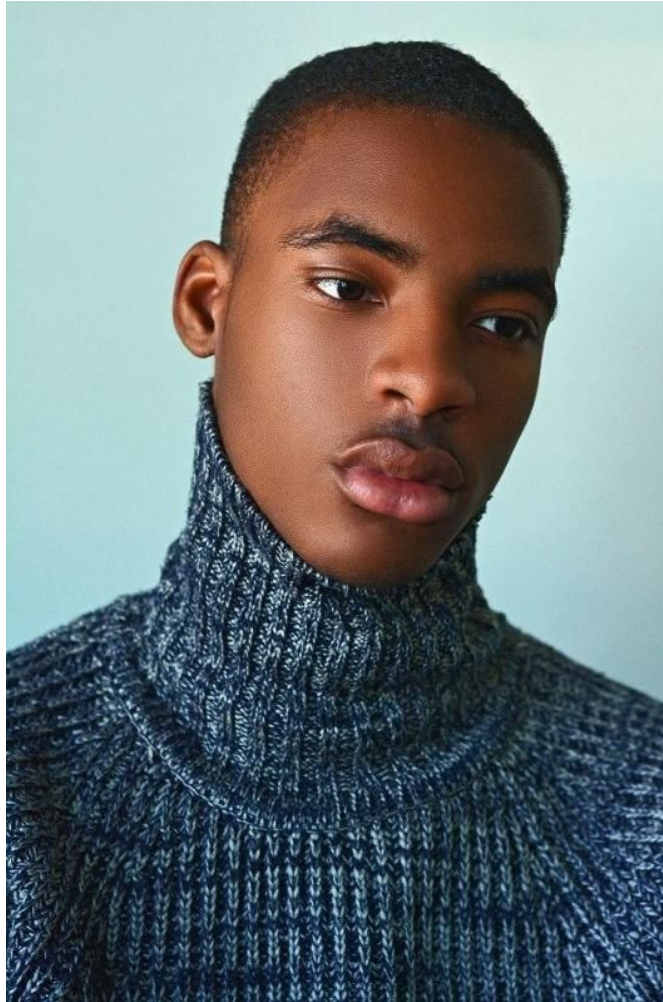


MUSE



COBBY JACKSON

Height : 6'1.5" / 187 cm | Waist : 30" / 76 cm | Chest : 36.5" / 93 cm | Shoe : 44.0 EU / 9.5 UK | Hair Colour : Brown | Eyes : Brown

MUSE



42316 LIGHT COTTON NYLON TWILL_NYLON METAL WATER BLOSSOM IN A LIGHTWEIGHT FABRIC, MADE WITH A NYLON WRAP AND SUPER FINE COTTON NEFT HOVER IN A TWILL PATTERN WITH DETAILS IN NYLON METAL. A WATER RESISTANT NYLON WITH AN IRIDESCENT LOOK THANKS TO THE SPECIAL DOUBLE GARMENT. THE ADDITION OF A SPECIAL AGENT TO THE DYE RECIPE MAKES THE GARMENT ANTI-SHOP. STAND UP COLLAR WITH FOLD-AWAY HOOD IN NYLON METAL WEAVE. DIAGONAL POCKETS WITH FLAP AND BUTTON FASTENING. RIBBED CUFFS AND BOTTOM HEM. ZIP FASTENING.


STONE ISLAND
WWW.STONEISLAND.COM



41225 WATER REPELLENT SUPIMA COTTON HOODED JACKET IN SUPIMA COTTON, THE MOST NOBLE COTTON SPECIES. FOR ITS EXTRA-LONG STAPLES AND FOR THE STRENGTH AND FINENESS OF ITS FIBRES. IN WATER REPELLENT SUPIMA COTTON, THE VERY FINE YARNS ARE SUPER TIGHTLY WOVEN TO ACHIEVE NATURAL WATER REPELLENCE. THE ADDITION OF AN IMPALPABLE INNER POLYURETHANE COATING ENHANCES THIS FEATURE WITHOUT TAKING AWAY ITS BREATHABILITY. THE SEAMS ARE ENTIRELY THERMO-IMPED, HOOD WITH THERMO-LINED EDGE. DIAGONAL POCKETS ON FRONT WITH BELLOWS BASE. ZIP FASTENING AND THERMO-LINED FLAP. SNAP FASTENER AT CUFFS. ZIP FASTENING WITH RAISED THERMO-LINED EDGES.


STONE ISLAND
WWW.STONEISLAND.COM

COBBY JACKSON

Height : 6'1.5" / 187 cm | Waist : 30" / 76 cm | Chest : 36.5" / 93 cm | Shoe : 44.0 EU / 9.5 UK | Hair Colour : Brown | Eyes : Brown

MUSE



COBBY JACKSON

Height : 6'1.5" / 187 cm | Waist : 30" / 76 cm | Chest : 36.5" / 93 cm | Shoe : 44.0 EU / 9.5 UK | Hair Colour : Brown | Eyes : Brown

MUSE



COBBY JACKSON

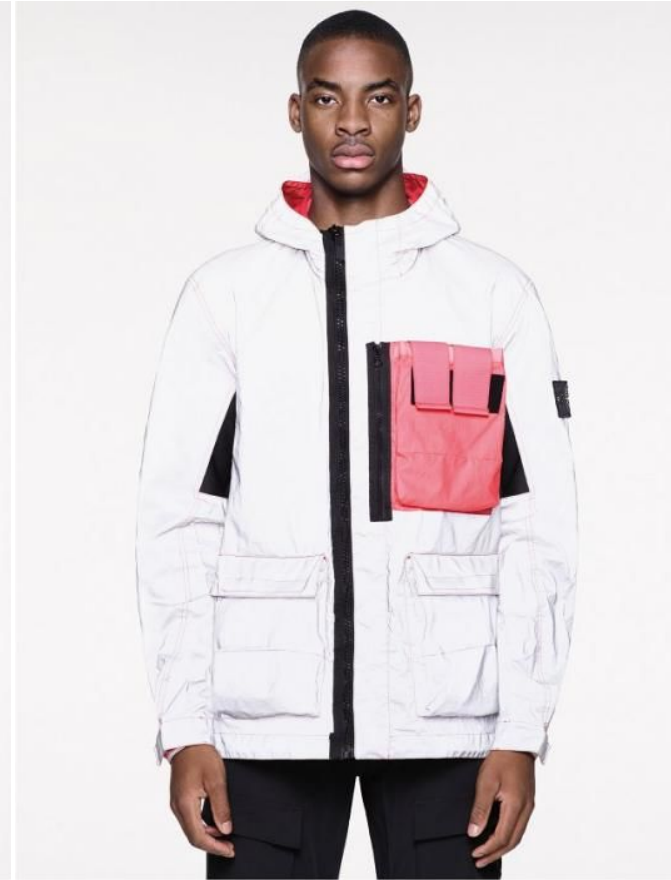
Height : 6'1.5" / 187 cm | Waist : 30" / 76 cm | Chest : 36.5" / 93 cm | Shoe : 44.0 EU / 9.5 UK | Hair Colour : Brown | Eyes : Brown

MUSE



42916 DAVIS-TC WITH DUST COLOUR TREATMENT
JACKET IN DAVIS-TC, BEGINNING WITH A JAPANESE STAR-SHAPED CROSS-SECTION POLYESTER/
POLYURETHANE SUBSTRATE. GARMENTS IN DAVIS-TC ARE SHIRI AND THEN SIMULTANEOUSLY GARMENT
DYED AND TREATED WITH AN ANTI-DROP AGENT. DURING THE GARMENT'S PRESSURE DYING AT
130° C, THE HEAT RADICALLY TRANSFORMS THE STRUCTURE AND HAND OF THE MATERIAL. suc-
cessive DUST COLOUR TREATMENT BEGETS FURTHER DRAGON AND UNWEARABLE COLOUR SHIN-
INGS ON THE SURFACE OF THE GARMENT FOR A THREE-DIMENSIONAL EFFECT. BAND COLLAR WITH
SNAP FASTENER. TWO POCKETS ON FRONT, ONE SMALL POCKET AND ONE POCKET WITH SIDE ZIP
FASTENING ON CHEST. SNAP-FASTENED CUFFS. BUTTON FASTENING.


STONE ISLAND
WWW.STONEISLAND.COM



43356 GARMENT DYED PLATED REFLECTIVE WITH MISSOLA GOMMATA
HOODED JACKET MADE WITH AN INNOVATIVE REFLECTIVE FABRIC ENGINEERED TO BE GARMENT
DYED. THE NYLON TELA BASE IS PLATED WITH A WATER AND WIND RESISTANT HEAVY REFLEC-
TIVE RESIN SUBSTANCE CONTAINING THOUSANDS OF GLASS MICROSPHERES. THE GARMENT IS
CONSTRUCTED WITH PARTS IN MISSOLA GOMMATA. THE FINISHED PIECE IS GARMENT DYED WITH
SPECIFIC DOUBLE DYE. HOOD WITH VELVET WITH NYLON MESH LINING WITH TAPPING. TWO LARGE
BELLONA POCKETS WITH FLAP AND VELCRO FASTENING ON FRONT. BELLONA POCKET ON CHEST IN
MISSOLA GOMMATA WITH VELCRO FASTENING AND NYLON TABS. BESIDES, A SECOND VERTICAL
POCKET WITH ZIP FASTENING. ZIP FASTENING.


STONE ISLAND
WWW.STONEISLAND.COM

COBBY JACKSON

Height : 6'1.5" / 187 cm | Waist : 30" / 76 cm | Chest : 36.5" / 93 cm | Shoe : 44.0 EU / 9.5 UK | Hair Colour : Brown | Eyes : Brown

MUSE



COBBY JACKSON

Height : 6'1.5" / 187 cm | Waist : 30" / 76 cm | Chest : 36.5" / 93 cm | Shoe : 44.0 EU / 9.5 UK | Hair Colour : Brown | Eyes : Brown